



**MISTORIA**  
ESTATE AGENTS



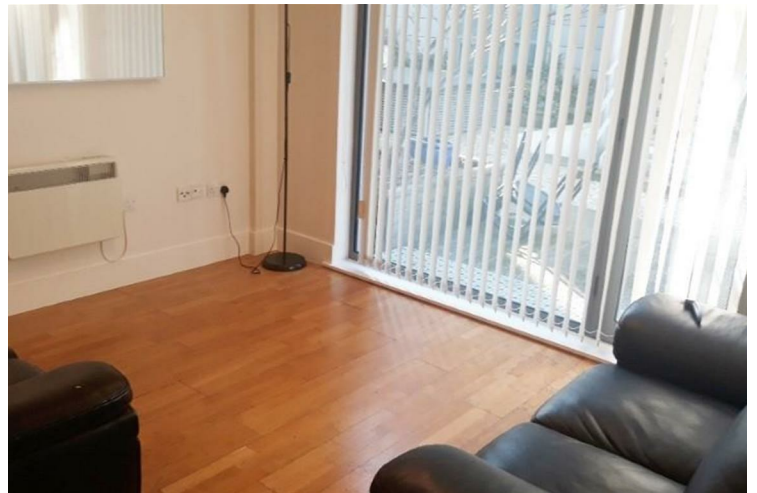
## 10 Circle 109 Liverpool

**£975 PCM**

Nestled in the vibrant heart of Liverpool on Henry Street, this modern apartment offers a delightful blend of comfort and convenience. Spanning an impressive 614 square feet, the property features two well-proportioned bedrooms, making it an ideal choice for professionals, couples, or small families seeking a stylish urban retreat.

Upon entering, you are welcomed into a spacious reception room that serves as the perfect space for relaxation or entertaining guests. The room is filled with natural light, creating a warm and inviting atmosphere. The apartment is part-furnished, allowing you the flexibility to personalise your living space to suit your taste.

The two bathrooms provide ample facilities for residents, ensuring privacy and convenience. Each bedroom is thoughtfully designed, offering a peaceful sanctuary for rest and rejuvenation after a busy day in the city.

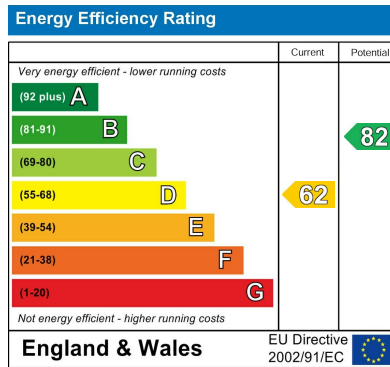
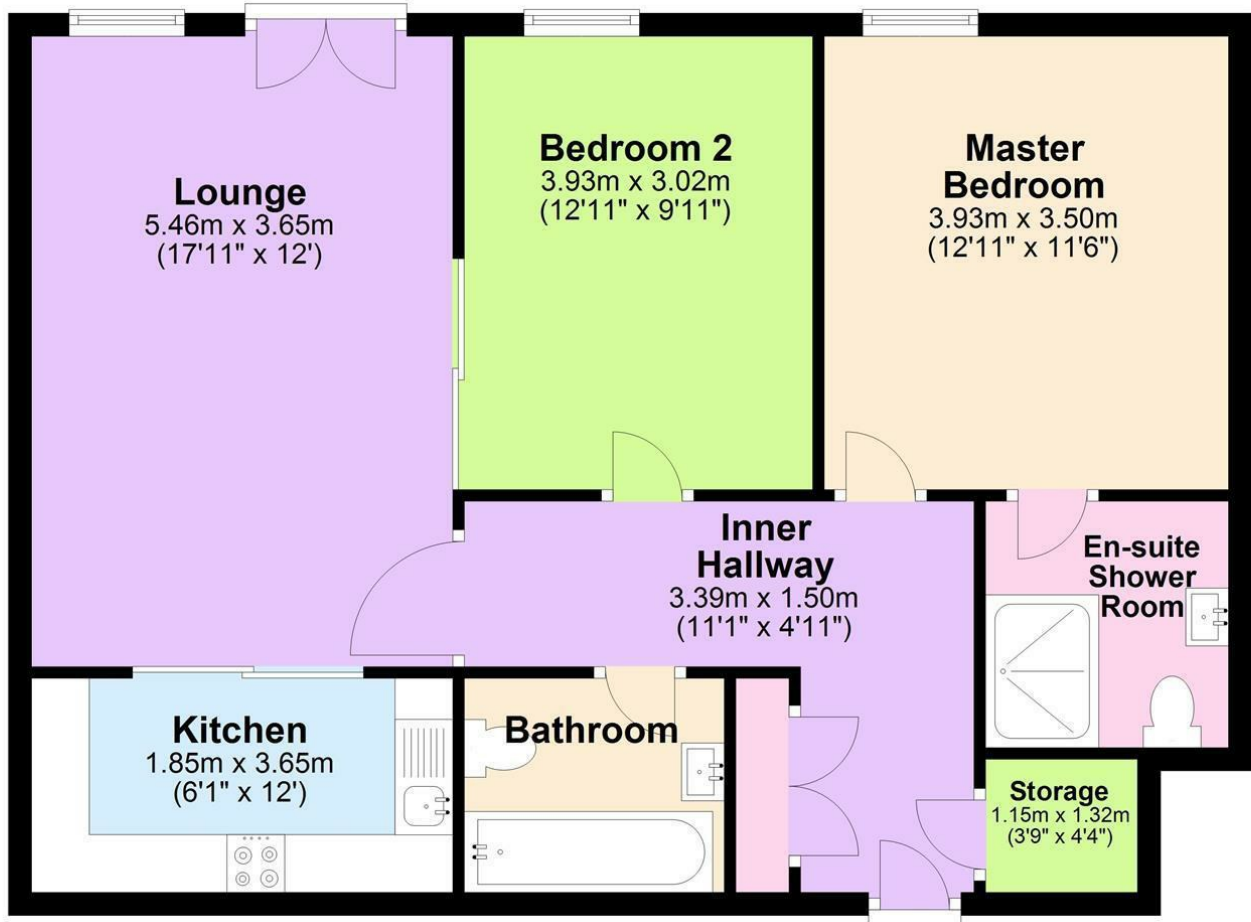


• INTERCOM • F KIT • WFLOORS • CH • D/G • PARKING





# First Floor



Agents Note: Whilst every care has been taken to prepare these particulars, they are for guidance purposes only. All measurements are approximate and are for general guidance purposes only and whilst every care has been taken to ensure their accuracy, they should not be relied upon and potential buyers/tenants are advised to recheck the measurements

Pall Mall Liverpool Mistoria  
22 Pall Mall  
Liverpool  
L3 6AL

0151 282 1539  
info@mistoria.co.uk  
mistoria.co.uk

